
APERTO Lucent Plus

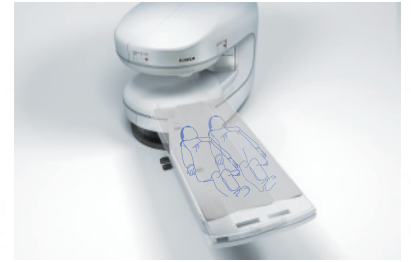
MRI like no other



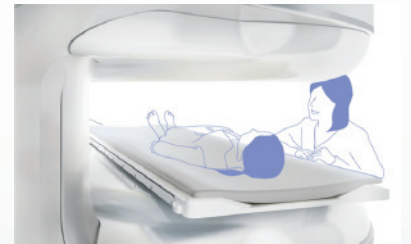
APERTO Lucent

Powerful, open-sided MRI delivers excellent image quality and a unique patient experience.

Single pillar design and wide, laterally moving table comfortably accommodates patients and eases technologist workload.



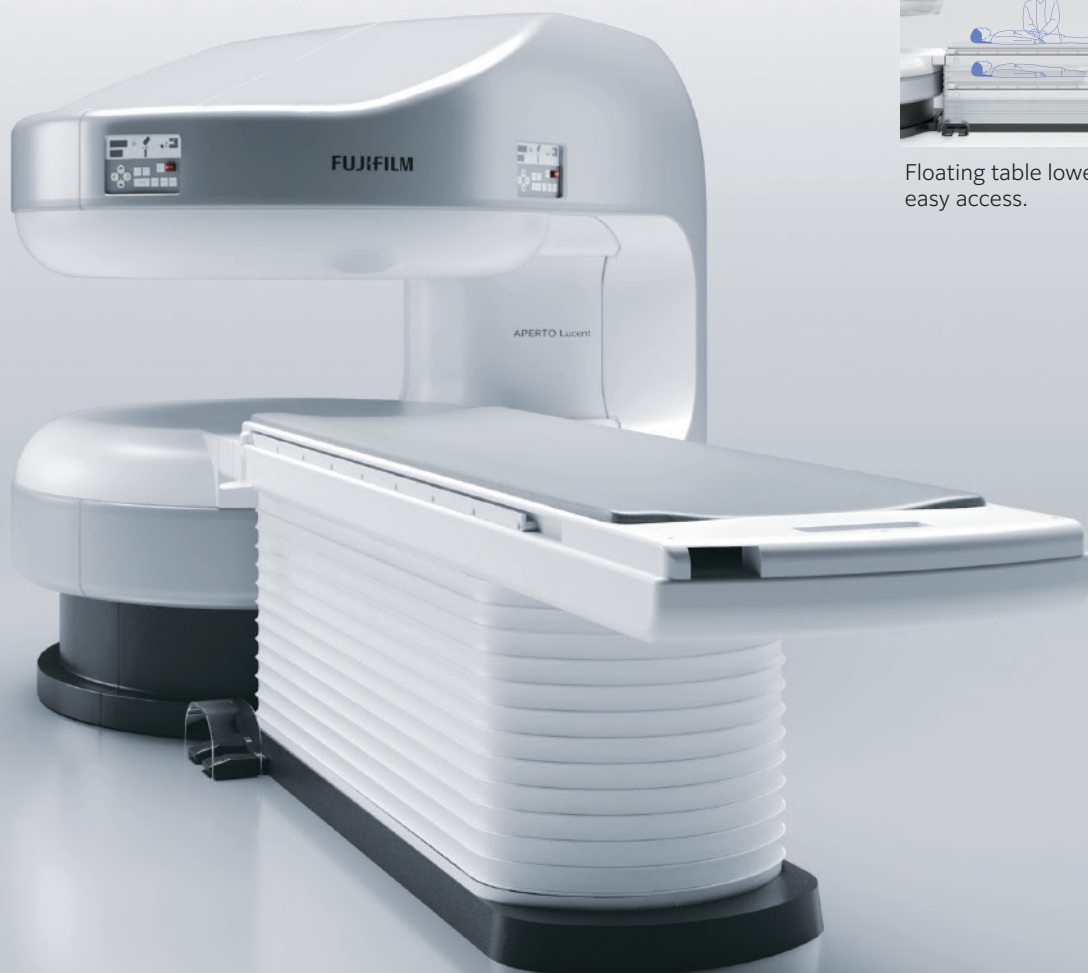
Exclusive lateral shift table for easy isocenter positioning



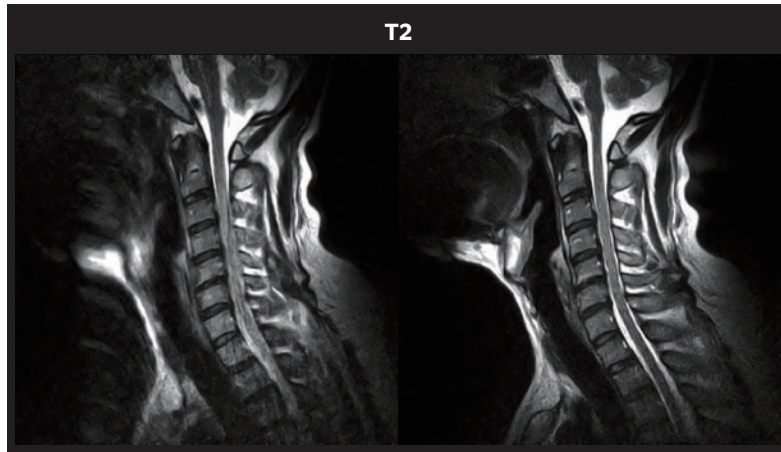
Patient access only possible with a true open magnet



Floating table lowers to 20" for easy access.

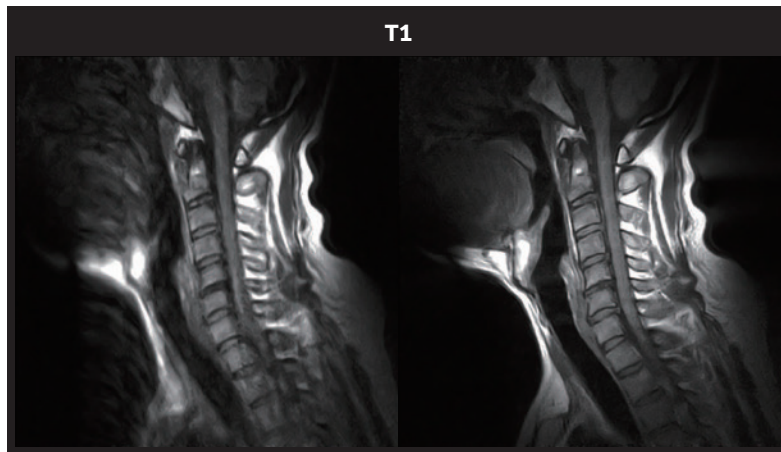


RADAR motion compensation



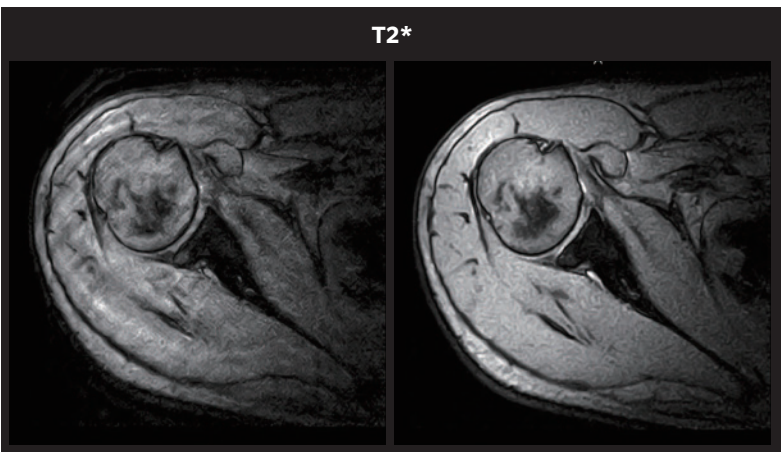
Conventional

RADAR



Conventional

RADAR



Conventional

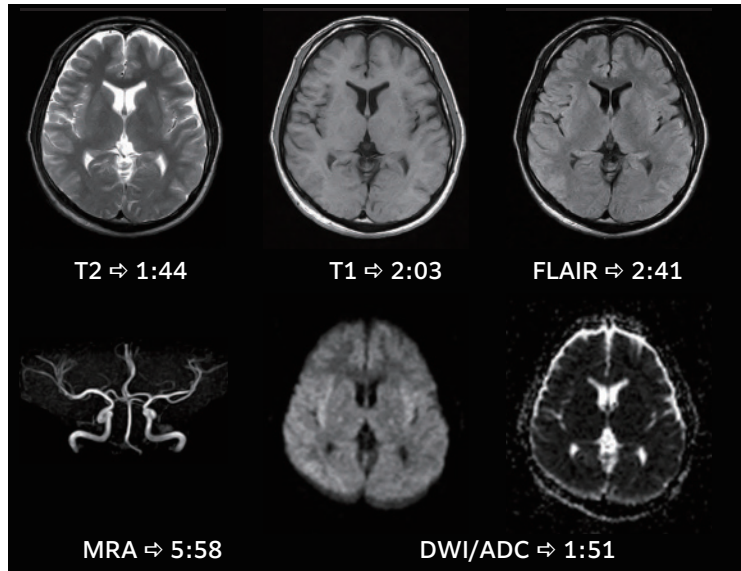
RADAR

RADAR radial scan technology mitigates motion artifact.

Broadly applicable to sequences and all anatomy, RADAR technology complements open sided magnet to further promote patient comfort and scanner workflow.

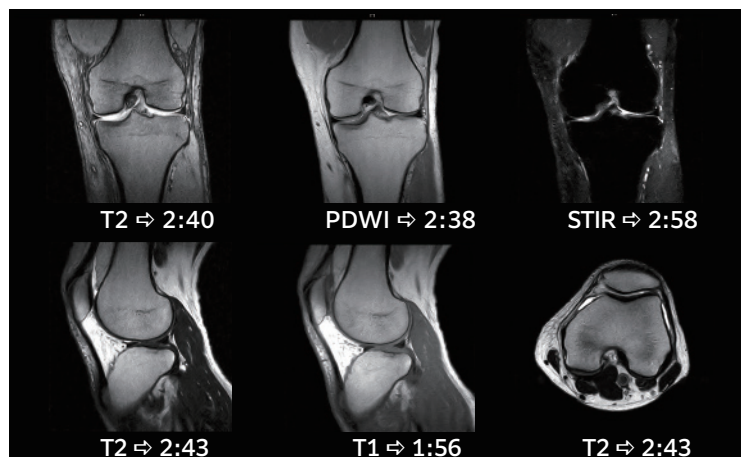
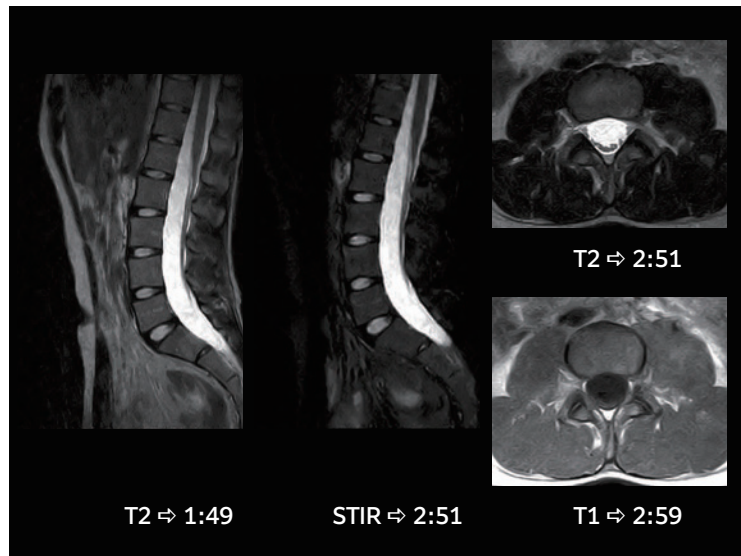


Accelerated Imaging with IP-RAPID



Iterative Processing reconstruction (IP-RAPID) reduces image data collection requirements without an SNR penalty.

High quality, fast scans* enhance patient satisfaction and imaging facility workflow



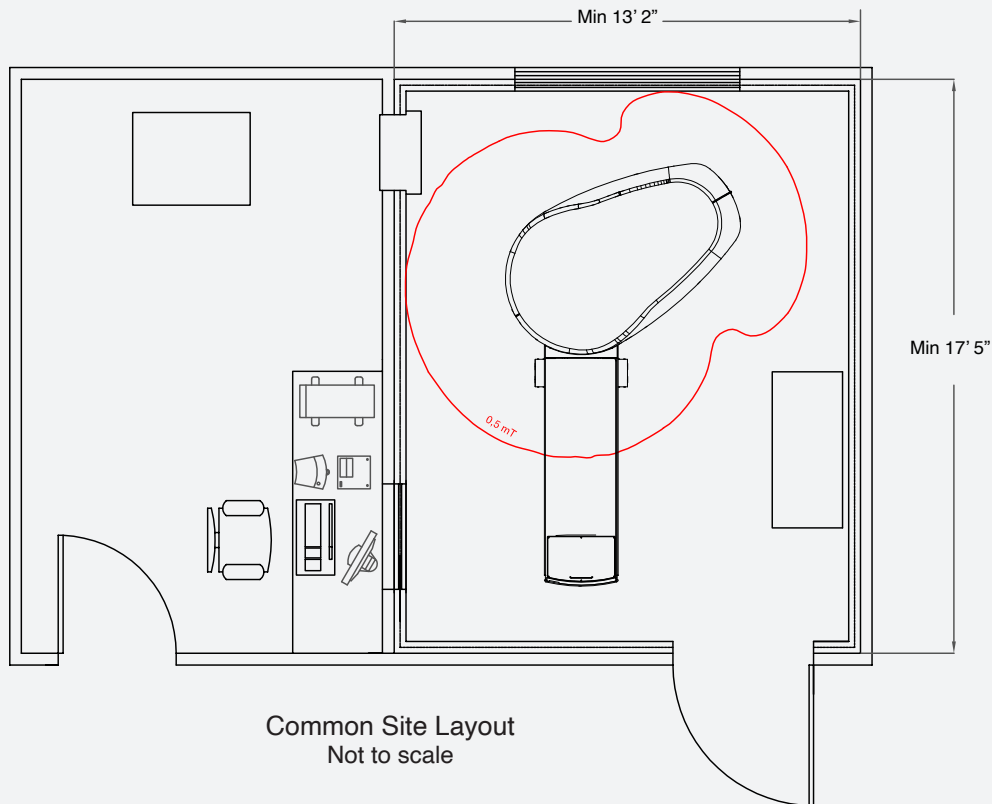
**Scan times achieved with IP-RAPID are user dependent*

Key Specifications

Field strength	0.4T
Magnet technology	Permanent
Shimming	Per patient, higher order
Table capacity	500 lbs
Lateral movement range	300 mm



Economic siting



- Single Phase
208 VAC 9.5 kVA
Power
- No helium
- Minimal room
dimensions

FUJIFILM Healthcare Americas Corporation

81 Hartwell Avenue, Suite 300, Lexington, MA 02421
fujifilmhealthcare.com 800.431.1850

© FUJIFILM Healthcare Americas Corporation DOC-0000000-A

