

HITACHI
Inspire the Next

ARIETTA Prologue



ALOKA
illuminate the change

Sense and Visualize Ultrasound



ARIETTA Prologue

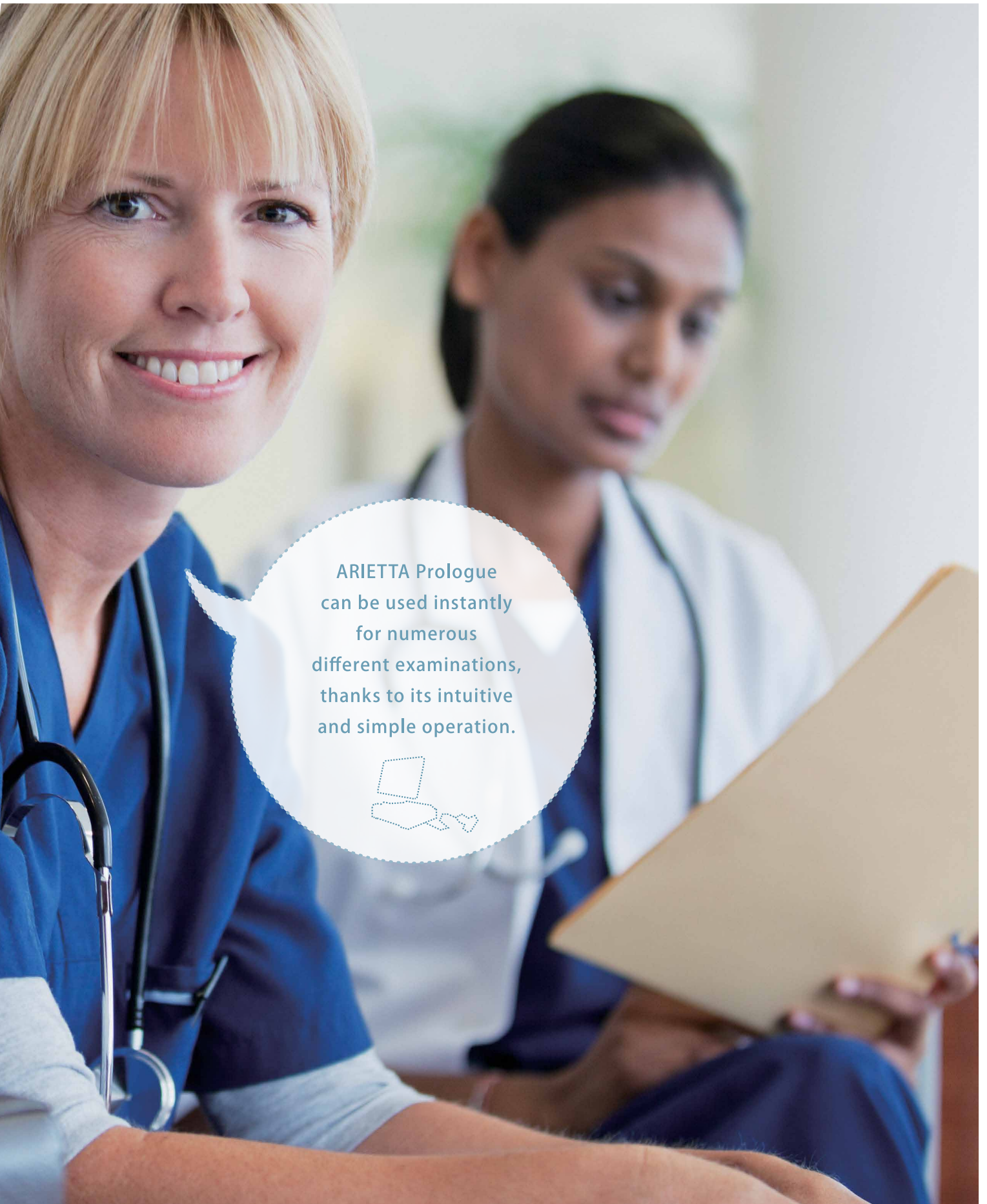
If you need to change your diagnostic approach every time a new imaging system is introduced...

is the system carrying out its basic role, that of supporting the diagnostic performance of the doctor?

The design and usability of ARIETTA Prologue has been comprehensively evaluated to deliver the right performance as a cutting-edge ultrasound system fitting to each user's requirements and operating environment. It can reduce the many struggles you face when introduced to a new ultrasound system, significantly improving your diagnostic performance.

Sense and Visualize Ultrasound





ARIETTA Prologue
can be used instantly
for numerous
different examinations,
thanks to its intuitive
and simple operation.



Compact Design & High Mobility

01

Adequate space for examination even in the smallest hospital room. Patients can feel at ease.

ARIETTA Prologue is designed to be hand carried.

It's use can be extended by combining it with the cart or the probe tray.



*Please contact your vendor for further details.

A style that fits

ARIETTA Prologue supports all sorts of examinations in various use environments, from routine examinations to orthopedics, emergency rooms, home visits, etc.



Examination room – Orthopedics



Treatment room – Anesthesiology



Ward



Consultation room



Emergency room



Home visit



Portable



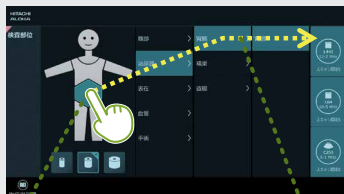
Full Smart Operation

02

Quick and accurate diagnosis by intuitive operation. Examination efficiency is improved.

ARIETTA Prologue is fully controlled from the touch panel. Complicated setting up is not necessary. ARIETTA Prologue provides you with a speedy examination tool when you need it.

Smart Setup



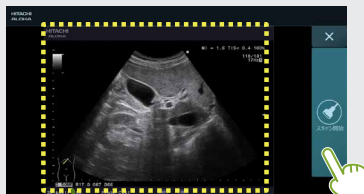
Choose the appropriate body part and the patient body size.

Select the region and organ for study.

Perform your examination using the optimum preset.

Region for examination, body size of patient...the ideal settings are automatically selected by this simple sequence of touch controls and gestures.

Transfer of past setup

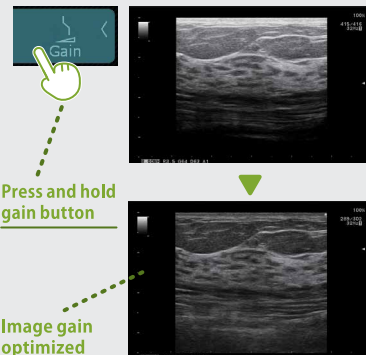


Select a past image.

Start searching by the condition of selected image.

Select a previously acquired image and the system will adjust to the same exam settings, invaluable for follow-up studies.

Image Optimizer



Press and hold gain button

Image gain optimized

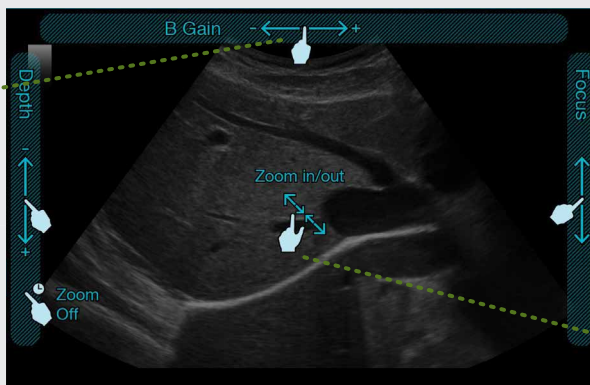
Image can be enhanced by a single button press. B-mode gain, base line position and velocity range in PW mode are all optimized.

Tablet-US

ARIETTA Prologue employs a full touch panel for intuitive and easy operation.

Gain adjustment

Change in depth range



Focal point

Zoom

Full Screen Mode

The image is enlarged, enabling detailed observation.



Normal mode



Full screen mode

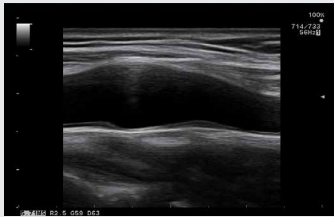


High Quality Image

The superior image quality enables a thorough diagnostic examination.

03

Even with its compact housing, ARIETTA Prologue uses the same image processing technologies normally reserved for high-end systems.



Spatial Compound Imaging

Transmission of beams in multiple directions to reduce artifacts that result from a single beam path. Tissue boundaries can be visualized clearly.



Adaptive Image Processing (AIP)

Reduces speckle noise and emphasizes borders. The tissue structure is imaged with clarity making images easier to interpret.

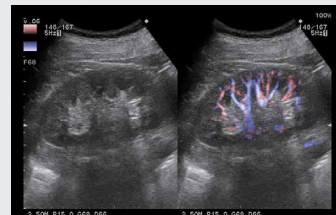


Silky Image Processing (SIP)

An adaptive tissue filter that boosts edge enhancement and contrast resolution providing clean tissue borders and detailed parenchyma.

Advanced Features

The ARIETTA Prologue is equipped with functions that improve efficiency and support rapid, accurate diagnosis.



eFLOW

Provides clearer delineation between tissue and blood flow compared to conventional Color Doppler. Even low velocity flow can be imaged with high sensitivity.



Needle Emphasis

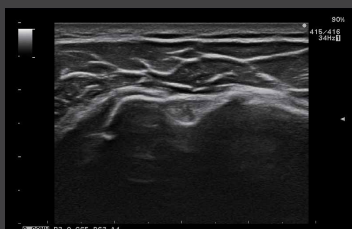
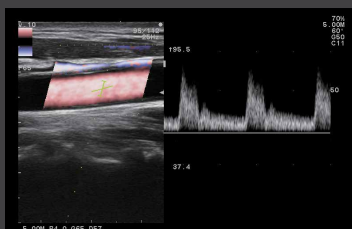
Technology to enhance the visualization of the needle, increasing safety and accuracy for biopsy and other interventional procedures.



Auto IMT Measurement*

Automatic trace of the vessel intima with a display of its mean thickness. It provides an assessment of risk of cardiovascular disease.





Abdomen
C251 5-1 MHz



Abdomen
C35 8-2 MHz



Small Parts
L441 12-2 MHz



Small Parts
L64 18-5 MHz



Biopsy
C22P 6-1 MHz



Cardiology
S211 5-1 MHz



Intraoperative
C42K 10-4 MHz



Intraoperative
L53K 15-3 MHz



Transvaginal with Endocavity
C41V1 10-2 MHz



ARIETTA Prologue



- ARIETTA is a registered trademark or trademark of Hitachi Aloka Medical, Ltd. in Japan and other countries.
- Hitachi Aloka Medical, Ltd. reserves the right to make changes in specifications and features shown herein, or discontinue the product described at any time without notice.
- The standard components and availability of optional items vary depending on the country.
- Please contact your vendor for further details.



We strive to provide quality products and services for our customers.

We operate with regard for the environment.

 **Hitachi Aloka Medical, Ltd.**

6-22-1, Mure, Mitaka-shi, Tokyo, 181-8622 Japan T +81 422 45 6049 F +81 422 45 4058 www.hitachi-aloکا.co.jp/english/