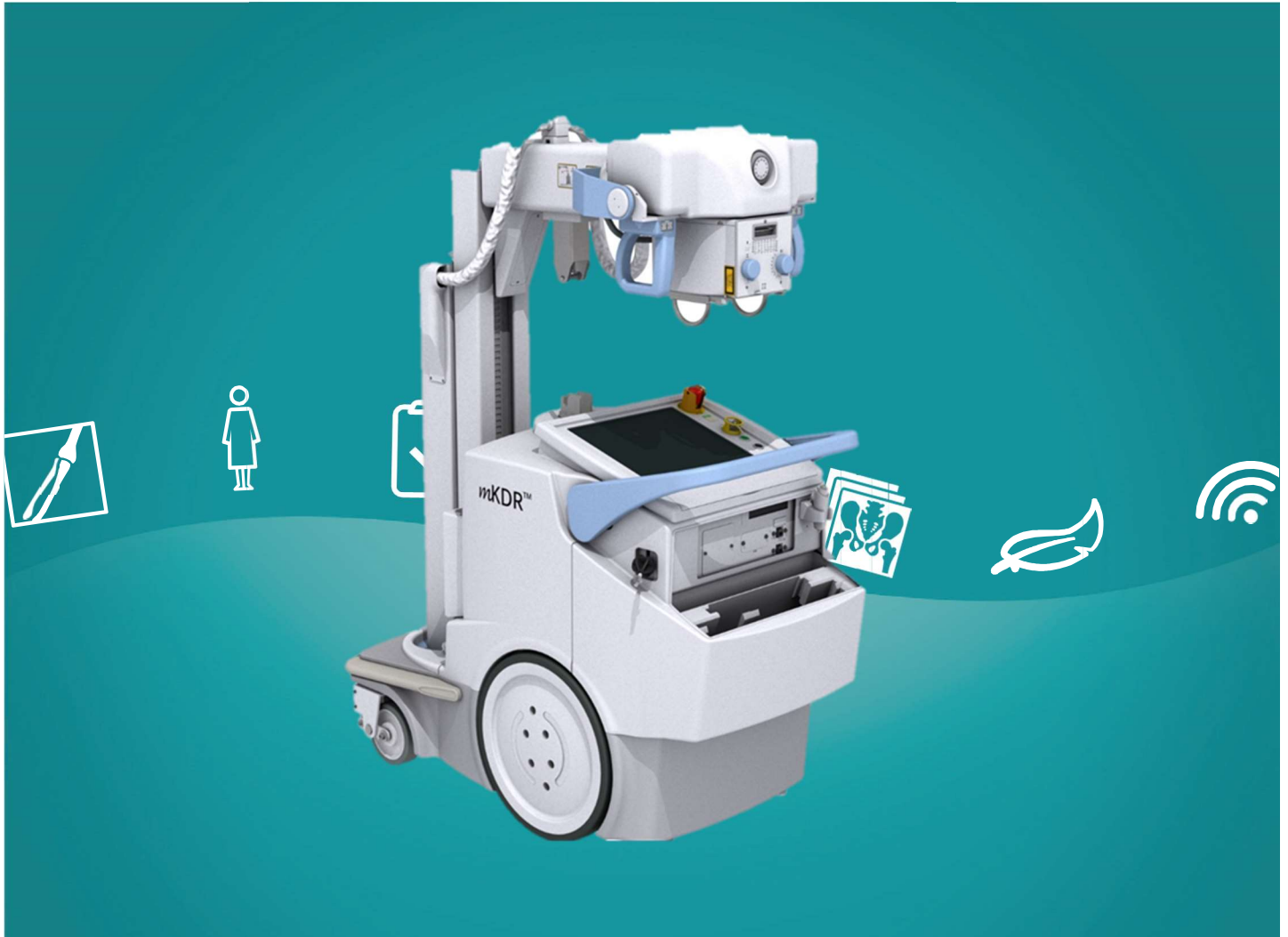


Radiology, on the move.



State-of-the-art imaging software supports detailed bone and soft tissue visualization.

The mKDR™ Digital Radiography System brings advanced digital X-ray capabilities anywhere in the hospital.

Staff and Clinicians will have the flexibility, image resolution and immediate results they need to make informed decisions faster, helping boost productivity and patient satisfaction for your practice.

- Superior image quality
- Compact footprint
- Versatile design



Radiology, on the move.

Superior image quality

The mKDR Essential includes a 14" x 17" detector that captures digital images in seconds. Combined with Ultra, the state-of-the-art Konica Minolta imaging software especially modified for mobile use to provide detailed bone and soft-tissue visualization for a complete diagnostic picture from a single exposure.

Space-saving design

The mKDR features a collapsing column and swivel arm to maximize visibility and positioning without sacrificing clinical utility.

Engineered for versatility

A full range of motion enables imaging at bedside, NICU, ICU, ER and even as a backup for exam rooms..



1. Collapsible column
2. Convenient swivel arm provides a wide range of motion
3. Power Driven
4. In-bin detector charging

Detector
AeroDR®
14" x 17" Detector
Multiple Configurations
Fully integrated

Key Features		
Movement	Collimator	Options
Power drive	Manual Control	Multiple Tube/Generator Combinations
Manual Rotation with Detents: 30°~120° - Detents on 30,60,90 and 120 degrees	Accessory Rails (Cones, Filters, DAP)	Pediatric Imaging Package
Collapsible Column	Field Light	
Tube Rotation ±90°	Six Blades	

Comprehensive Coverage for Peace of Mind

To minimize downtime, maximize productivity and mitigate risk over a long functional life, the Konica Minolta Blue Moon Select Plan for the KDR Essential Digital Radiography System goes beyond typical warranty coverage by including DR panel protection, software updates, onsite service, remote applications, and 24/7 technical assistance. One simple plan. No worries. Sign up at the system point of sale for the lowest five-year cost of ownership.

© 2018 Konica Minolta Healthcare Americas, Inc.



Konica Minolta Healthcare America, Inc.
 411 Newark Pompton Turnpike
 Wayne, New Jersey 07470
 Tel: (973) 633-1500 Fax: (973) 523-7408
konicaminolta.com/medicalusa

M12820218 RevA