

OV^{AL} 1.5T ECHELON

WIT RF

COMFORT. **WORKFLOW.** PERFORMANCE.

From patient comfort to streamlined workflow to exceptional performance, Echelon Oval fulfills a diverse set of your imaging needs with Fujifilm's Workflow Integrated Technology (WIT). The WIT RF system, delivers integrated coil technology to simplify patient positioning and extend coverage with high SNR.

The lightweight, multi-element design produces superb image quality, permits seamless switching between coil setups from exam to exam, while the Auto Element Selection feature simplifies the procedure by automatically selecting the coil configuration to optimize the scan.

Enhancing the WIT RF performance, Digital Drive DX provides analog to digital conversion of the MRI signal right at the gantry with optical RF transmission to the equipment room for image processing. This reduces the vulnerability to electrical noise pickup and ensures the highest possible Signal to Noise Ratio (SNR).

WIT RF FEATURES

- 16 or 32 channel RF receiver
- Integrated Head, Neck, Spine and Torso coils
- Feet first or head first positioning for all exams
- Multitude of extremity and specialty coils
- Auto Element Selection
- Digital Drive DX



WIT COILS

The WIT receiver coil system provides integrated coil arrays that can be used individually or in combination with other WIT coils to give the operator maximum flexibility for positioning patients of all sizes.

WIT Head and Neck Imaging

- Combine up to 22 elements for optimized head, neck and neurovascular imaging
- WIT Posterior Head/Neck
 - Plugs into the patient table at either end for head-first or feet-first imaging
 - Provides maximum patient comfort and technologist convenience
- Head/Neck Attachments
 - WIT Anterior Head
 - WIT Anterior Neck
 - WIT Anterior Neurovascular (NV)



Anterior Head



Anterior Neck



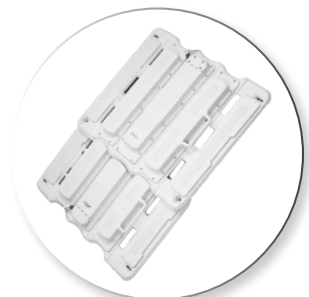
Anterior NV

WIT Spine and Body Imaging

- Combine multiple elements for exceptional coverage and quality for abdomen and spine imaging
- WIT Posterior Spine A & B
 - Plugs directly (no cable) into the patient table
 - Easily re-positioned for feet-first or head-first imaging
- WIT Torso
 - Complements the WIT Spine coils to provide uniform, volumetric coverage over a large FOV essential for dynamic abdominal scans



8 Element Torso
(16 Channel System)



20 Element Torso
(32 Channel System)

EXTREMITY & SPECIALTY COILS



RAPID Shoulder

Contoured to optimize placement of the coil elements enabling this 8 channel coil to deliver outstanding axillary penetration.



RAPID Extremity

This unique large aperture 12 channel coil supports accelerated high-resolution lower extremity imaging and promotes patient comfort.



Flexible Extremity

The versatile 4 channel coil provides high resolution imaging of extremities such as forearm, elbow, upper arm, lower leg, and more.



RAPID Hand/Wrist

Large enough to support a broad patient demographic, the 7 channel coil can be used for multiple applications including wrist, finger, hand, forefoot and toes.



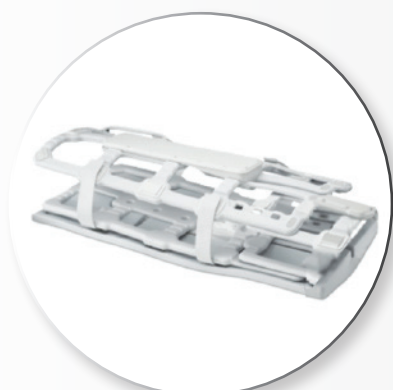
RAPID Foot/Ankle

The boot design with 8 channels delivers high-resolution, high uniformity imaging of the structures of the lower leg, foot and ankle.



Micro Coil

47 mm diameter loop coil provides exceptional SNR and resolution for small field of view orthopedic imaging such as fingers and toes.



RAPID PV

The 16 element coil combines with WIT anterior and posterior coil sections to promote high-resolution peripheral vascular imaging.



RAPID Cardiac

The 6 element design works in conjunction with the WIT Posterior Spine coils to provide optimal coverage of chest and cardiac regions.



RAPID Breast

The 7 channel design delivers image quality and acquisition speed that are essential for dynamic studies of the breast, and interventional capability.



OVAL
ECHELON

FUJIFILM Healthcare Americas Corporation

81 Hartwell Avenue, Suite 300, Lexington, MA 02421

www.fujifilmusa.com

800.431.1850

©2021 FUJIFILM Healthcare Americas Corporation

FUJIFILM
Value from Innovation