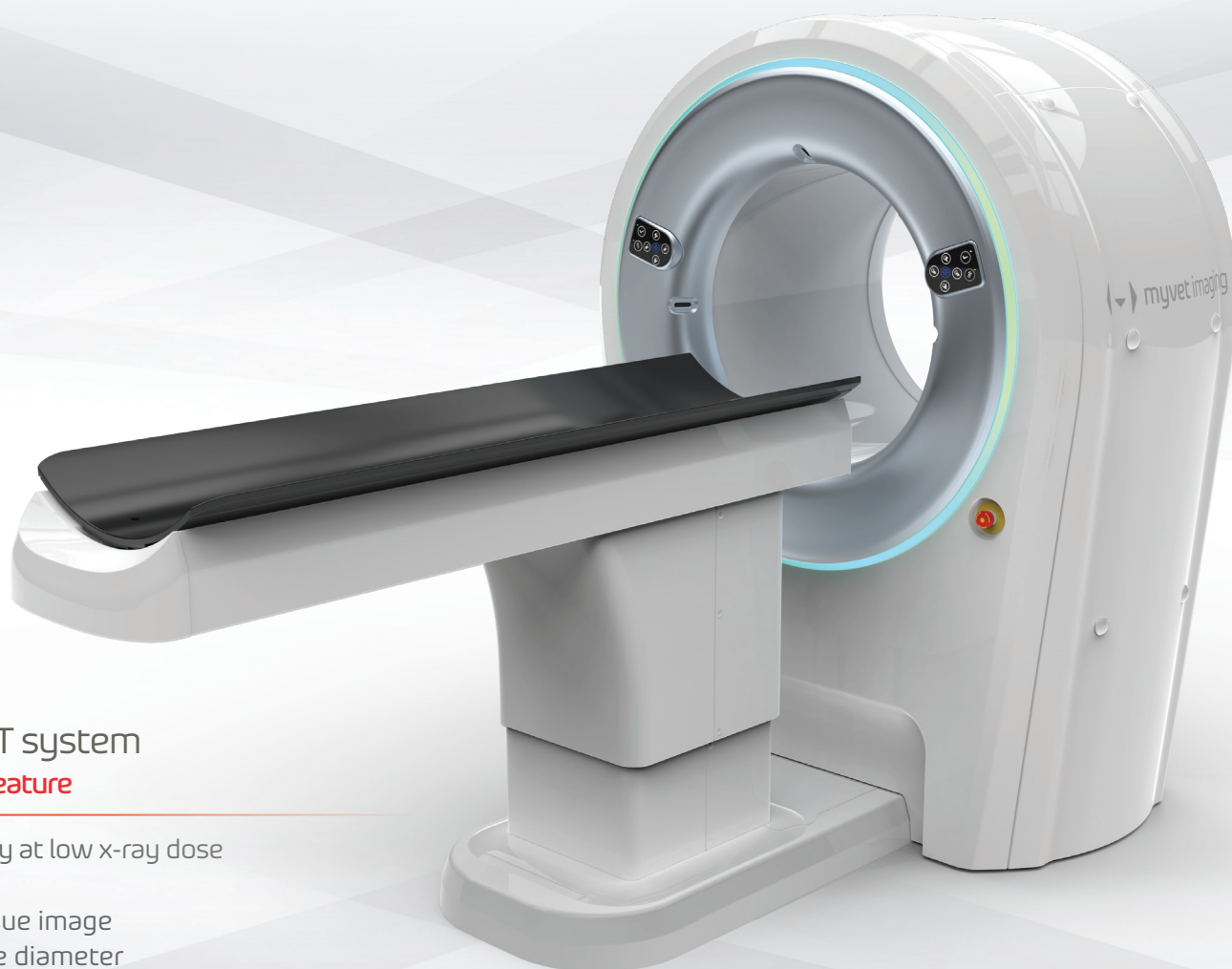


THE PREFERRED WHOLE BODY
SCANNING METHOD

myvet CT i3D



Spiral linear CT system
with scout view feature

- High image quality at low x-ray dose
- 3D CT mode
- Superior soft tissue image
- 23 inch wide bore diameter
- Narrow slice thickness
- Large FOV
- Fast installation and easy set up

Acquire high quality CT images to make clinical diagnoses

Advanced Technology Application

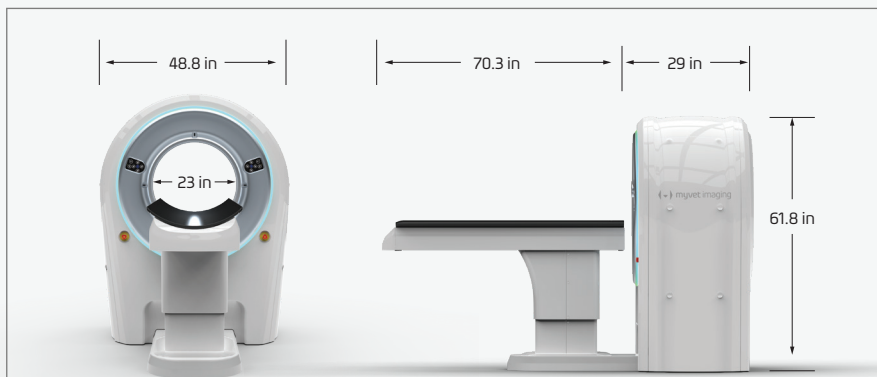
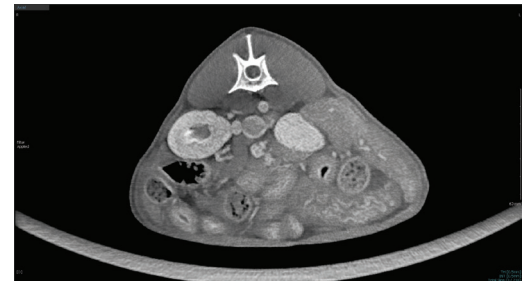
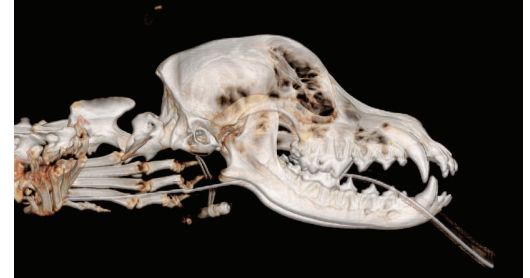
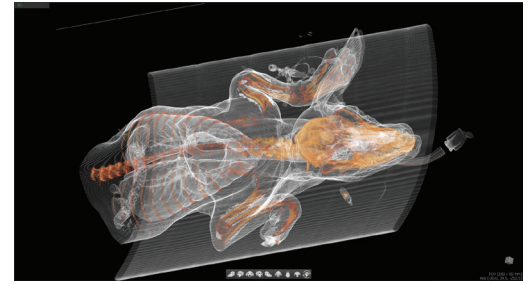
The new standard for veterinary computed tomography is the MyVet CT i3D SL, incorporating innovative spiral linear technology. The linear detector acquires thin image slices within a large field of view as the x-ray tube circles around the advancing table.

Large Bore Design in a Compact Footprint

A large bore accommodates medium/large dogs and the elevating table facilitates animal positioning in center of bore to maximize image acquisition. The overall compact system design provides a more efficient and space-saving work environment.

Obtain High Image Quality

The 0.4 mm to 0.8 mm narrow slice thickness and optimized image contrast with 14-bit grey-scale maximizes image quality. Acquiring images with a narrow beam superior image contrast by reducing scattered radiation effects associated with cone beam image acquisition. Images can be displayed using 3D reconstruction techniques.



Specifications

Detector Type	CMOS Photodiode
Pixel Size	99 μ m
A/D	14 bit
Tube Voltage	50 ~ 120 kVp
Tube Current	10 mA

Exposure Time	20 Sec, 40 Sec, 60 Sec
CT FOV	12"x 5" / 12"x 10" / 12"x 16"
Scout View FOV	9.8"x 35.4"
2D Scan FOV	9.8"x 35.4"
Line Voltage (input)	100 ~ 220V, 15A

* Specifications subject to change without prior notice *

myvet CT i3D_{SL}



81 Ruckman Rd. Closter NJ 07624
Tel: 201.561.0223 Support: 201.585.0302
information@myvetimaging.com www.myvetimaging.com