

# Vetus E7

Hand-Carried Veterinary Ultrasound System

## Envision, Enlighten, and Explore



Envision, Enlighten, and Explore



Search Mindray Animal Medical

[www.mindrayanimal.com](http://www.mindrayanimal.com)  
[service@mindrayanimal.com](mailto:service@mindrayanimal.com)

P/N:ENG-Vetina CS3-210285X8P-20210831  
©2021 Shenzhen Mindray Animal Medical Technology Co., LTD. All rights reserved.



mindray

Since its founding, Mindray Animal Medical has been dedicated to developing innovative and accessible ultrasound solutions for the animal care environment. It is this commitment to excellence that has brought you ZONE Sonography® Technology+ (ZST<sup>+</sup>), evolving industrial designs and comprehensive disinfection solutions.

The Vetus E7 Ultrasound System has been thoughtfully designed to overcome the obstacles clinicians face in today's challenging healthcare environment. With a sealed user interface design and revolutionary, software-based beamformer technology, ZST<sup>+</sup>, the Vetus E7 System combines best-in-class image quality with an intuitive user experience to help ensure reliable and efficient diagnosis during the most challenging exams.

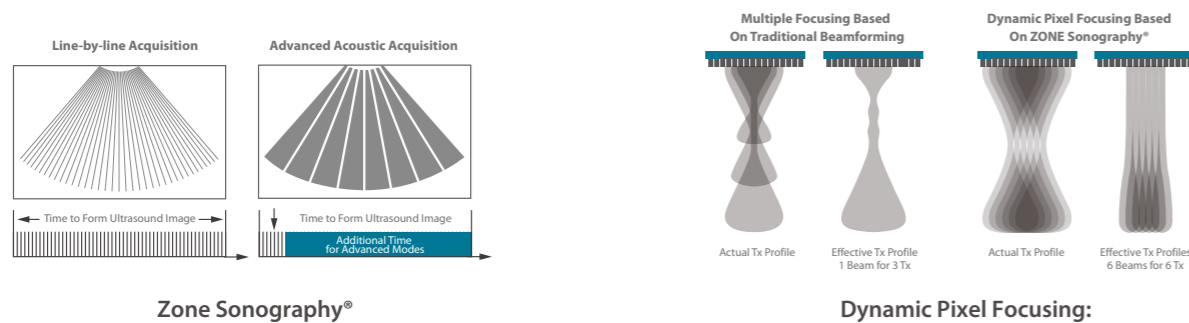
# Thin, light, powerful

With a weight and thickness of just 6.6 lbs and 1.7 in, respectively, the Vetus E7 System's main unit is one of the lightest and thinnest laptop ultrasound machines in the industry. In addition, this compact, durable, and powerful System houses advanced hardware built to maximize performance in all applications.



## ZONE Sonography® Technology+

The Vetus E7 Ultrasound System is the first-ever laptop-based system to be powered by ZST+, providing mobility and reliability in an extraordinarily compact design.



## Ideal System for Your Veterinary Practice



### Innovative design

- Intuitive touch interface
- Seamless design control panel
- Sealed touchpad

### Sturdy construction

- Prevent residue buildup
- Resist corrosion from harsh cleaning agents
- Highest standard of material selection

### Magnetic power socket

- Easy connection
- Prevents cable strain



### U-Bank

- U-bank battery companion supports up to eight hours of continuous scanning

### Specialized transducer holder

- Enables easy application of sterile cover



### Innovative storage

- Three storage baskets
- Interchangeable design

### Expanded height adjustment

- Flexible height adjustment for optimal scanning





Liver and gallbladder of canine



Portal Vein of canine



Adrenal gland of canine



Renal blood flow of canine



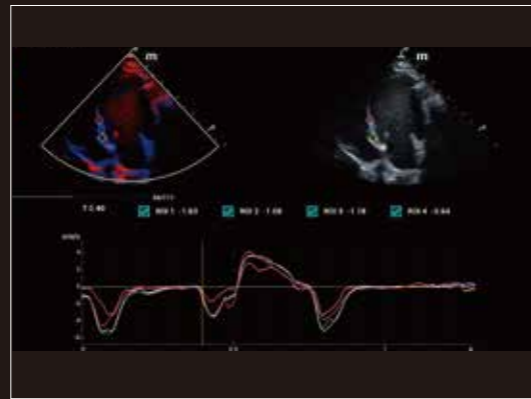
Spleen of canine



Spleen blood flow of canine



Cardiac blood flow of canine



TDIQA of canine

