

# IMPAX Agility

A sophisticated imaging informatics solution designed for clinical productivity and optimal total cost of ownership



- Usability
- Clinical Productivity
- Hanging Protocols
- 3D

## Usability

We have refined user experience and workflow by providing carefully designed desktops for specific roles: Diagnostic, Technologist, Clinician, Transcriptionist, Medical Secretary, and Administrator desktops. Each desktop is purposefully built with the specific functions required by each; we didn't try to cram everything into one GUI! Great care is taken to ensure each desktop is as intuitive and productive as possible.

## Clinical Productivity

IMPAX Agility in combination with the Agfa NX workstation supports the industry leading MUSICA<sup>2</sup> algorithms, resulting in an excellent perceptibility, enhancing details. Multiscale window width and level can be used with non-Agfa Computed Radiography images. IMPAX Agility includes other important general radiology tools such as MIP/MPR/3D, reporting (text, dictation, speech), CT/MR linking, cursor mode and more. IMPAX Agility also includes modern tools for diagnostic mammography, angiography, and advanced ultrasound tools for OB/GYN, cardiology, vascular, and radiology.

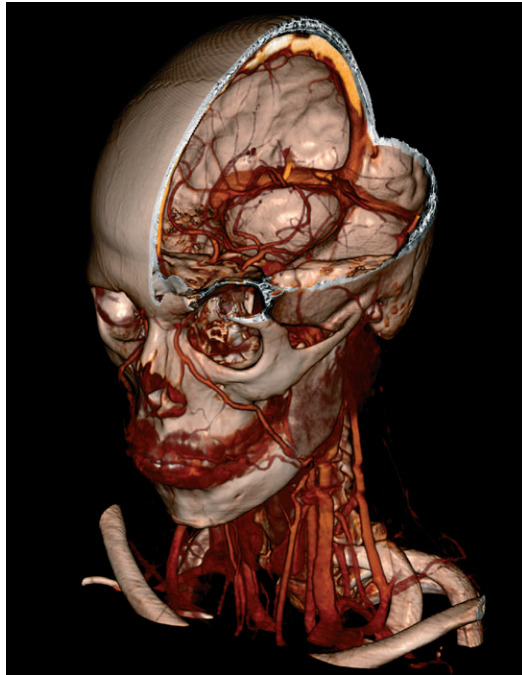
## Hanging Protocols

We spent much time looking at ways to optimize modern digital imaging workflow by watching users work and watching where they spend their time. The results are the new hanging protocols available in IMPAX Agility, which are designed to provide an automated and optimized image review workflow thereby reducing the extraneous work seen in most systems today.

## 3D

IMPAX Agility is completely 3D enabled to handle today's volumetric studies. The IMPAX 3D engine supports Maximum Intensity Projection (MIP; maximum intensity, minimum intensity and average intensity), Multi Planar Reconstruction, Curved Planar Reconstruction and Volumetric Reconstructions (VR). Users can work in a single application with familiar tools and workflow, which results in more automation and better usability. Further, it's all hosted on the same hardware, reducing complexity and cost.

- Sectional Reports
  - Task Based Workflow
  - Results Distribution
  - Modern Architecture
  - One Platform
- 
- Always Up-to-Date
  - Standards
  - White papers



## Sectional Reports

Many criticize structured reports as being too time consuming, while other constituents are concerned with the quality of information found in reports. Sectional reporting is an efficient and effective compromise between unstructured and structured reporting. Report sections are uniquely identifiable fragments of a report defined to serve a specific purpose in the clinical workflow or medical decision process. Sectional reporting increases the reporting consistency, predictability and completeness (both in terms of content and timing) and, ultimately, decreases report turnaround time. The overall result is higher quality and consistency of reports for your referring clinicians.

## Task Based Workflow

IMPAX Agility includes a powerful Task Based Workflow engine that is better able to serve the needs of contemporary digital imaging workflow. A set of tasks defines the overall steps and points of communication between those involved in performing a procedure. Task based workflow will aid healthcare organizations in verifying that appropriate steps are followed given the procedure, circumstances, and most importantly, their own workflow requirements. Workflow engines are commonplace in other industries, and now IMPAX Agility introduces the benefits to medical imaging.

## Results Distribution

Distributing your results is an important step to your workflow, and when done well they provide convenient and professional looking results. With the IMPAX Agility Clinician Desktop you can share many of the same imaging tools available in the Diagnostic Desktop, fantastic for internal clinicians and specialists. IMPAX Agility also fully supports our innovative XERO viewer for EPR integrations. With XERO, no software whatsoever needs to be installed; all you need is a standard web browser (Microsoft Internet Explorer, Apple Safari, Mozilla Firefox or Google Chrome) and a modest internet connection. Results can also be distributed through printing, CD media, and DVD media, e-mail or fax. Further, the look and feel of your reports can be customized to match your own branding.

## Modern Architecture

IMPAX Agility was built from the ground up, resulting in a completely modern architecture. IMPAX Agility fully supports 64 bit processing as well as 64 bit memory addressing. The platform has also been optimized for parallel processing. IMPAX Agility Desktops are also more resilient to network failures and latency issues. The result is a fast and robust architecture, helping you get the most out of your hardware investments.

## One Platform

IMPAX Agility consolidates many applications onto one single platform: PACS, reporting, 3D and connectivity. This greatly reduces complexity by minimizing the amount of hardware and databases required to support your overall imaging requirements. It also means that all of these applications can benefit from the same innovative delivery and upgrade benefits that IMPAX Agility platform brings. Reduced complexity and administrative overhead! Technical benefits aside, users also benefit from common usability, tools, and administration.

### Always Up-to-Date

IMPAX Agility’s software updates are automatically delivered to sites via our service delivery network. And because IMPAX Agility is completely modular, only those things that have changed are delivered to your system thereby reducing the bandwidth and time required to deliver updates. We have also minimized the amount of downtime and effort upgrades typically require. We take great care to make our application intuitive. For upgrades, this means that existing features won’t change so dramatically that you will have to relearn them all over again. For new features, they will be implemented in a manner that matches our overall form and behavior standards, ensuring they are as intuitive as possible. The result is reduced training (or learning) costs and increased productivity.

### Standards

Agfa HealthCare has a long tradition of interoperability and strong support for standards. IMPAX Agility helps protect future and existing IT investments through extensive support for standards based communication: HL7 v2.5, DICOM 3.0, and IHE. Our full conformance statements are available on our website <http://www.agfahealthcare.com/goto/interoperability> or via your sales representative.

### White Papers

We have published an extensive set of white papers which expands on many of the topics discussed. Please feel free to contact your sales representative for more details or check our website <http://www.agfahealthcare.com/goto/impaxagility>.

## Technical Specifications

#### Diagnostic Desktop

- Microsoft Windows 7 64bit Professional, Ultimate or Enterprise Editions
- 1, 2, 3, and 5 monitor configurations
- Intel Xeon CPU with minimum 8 GB RAM

#### Clinician and Technologist Desktops

- Microsoft Windows XP or Windows 7, 32bit or 64bit, Professional, Ultimate or Enterprise Editions
- Minimum 2 core CPU with 8 GB RAM

#### Administrative and Medical Secretary Desktops

- Microsoft Windows XP or Windows 7, 32bit or 64bit, Professional, Ultimate or Enterprise Editions
- Minimum 2 core CPU with 4 GB RAM

#### XERO Web Viewer

- Most standard operating systems and browsers, shown below. Browsers and operating systems not shown in the table are not supported by XERO.

Browser	Version	Windows XP SP3	Windows Vista	Windows 7	Linux	Mac OS X
Google Chrome	17.x	✓	✓	✓	-	-
Microsoft Internet Explorer	6.x	✓	-	-	-	-
Microsoft Internet Explorer	7.x	✓	✓	-	-	-
Microsoft Internet Explorer	8.x	✓	✓	✓	-	-
Mozilla Firefox	3.6, 8, 9, 10, and 11	✓	✓	✓	✓	✓
Apple Safari	5.x	✓	✓	✓	-	✓

#### Server

- Microsoft Windows 2008 R2 64bit, single Oracle DB instance
- Hardware requirements dependent on volume

## Insight. Delivered.

Agfa HealthCare is a global leader in the fast growing market of integrated IT and imaging systems, offering healthcare facilities a seamless flow of information and a 360° view of patient care. The company has a unique, holistic approach, enabling it to provide in-depth clinical know-how and fully integrated hospital-wide solutions. These specialized solutions integrate IT and imaging systems for Radiology, Cardiology, Mammography and Orthopaedics. Agfa HealthCare's enterprisewide IT platform integrates all administrative and clinical data within a healthcare facility and is designed to match the workflow of specific types of healthcare professionals. ■

[www.agfahealthcare.com](http://www.agfahealthcare.com)

Agfa and the Agfa rhombus are trademarks of Agfa-Gevaert N.V., Belgium, or its affiliates. IIMPAX is a trademark of Agfa HealthCare NV, Belgium or its affiliates. All other trademarks are held by their respective owners and are used in an editorial fashion with no intention of infringement. The data in this publication are for illustration purposes only and do not necessarily represent standards or specifications, which must be met by Agfa HealthCare. All information contained herein is intended for guidance purposes only, and characteristics of the products and services described in this publication can be changed at any time without notice. Products and services may not be available for your local area. Please contact your local sales representative at [agfa.com](http://agfa.com) for availability information. Agfa HealthCare diligently strives to provide as accurate information as possible, but shall not be responsible for any typographical error.

IMPAX Agility is only released for Turkey and selected countries in Latin America.

© 2013 Agfa HealthCare NV  
All rights reserved  
Published by Agfa HealthCare NV  
B-2640 Mortsel - Belgium  
5XSPL GB 00201302