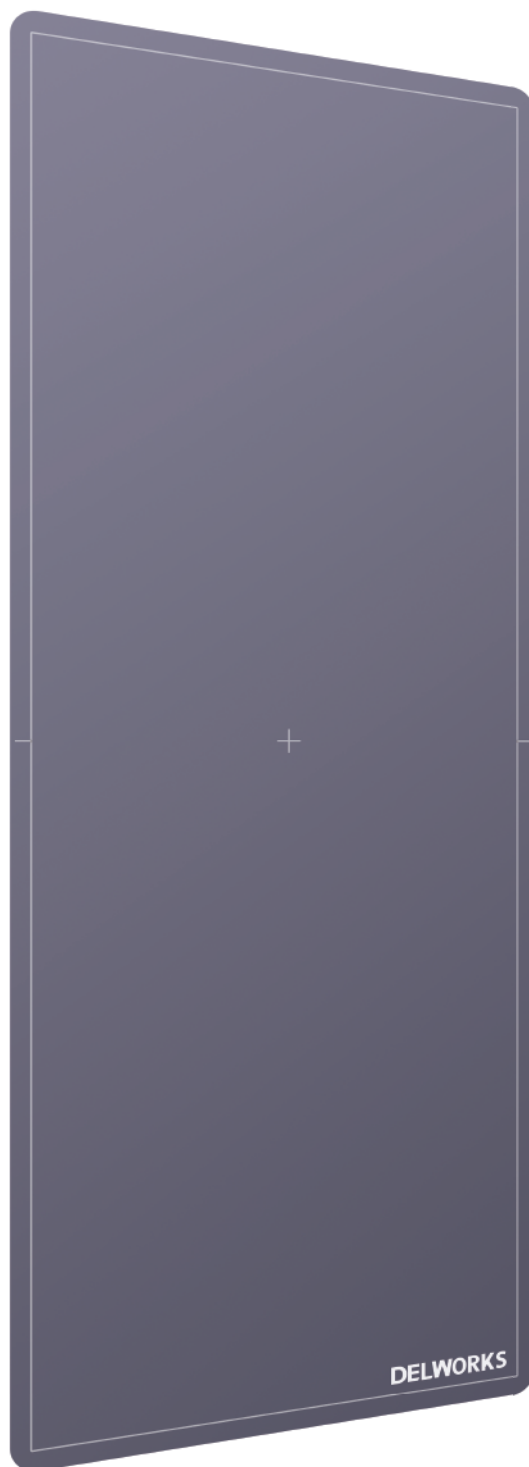


DEL MEDICAL

DELWORKS_{LLI}

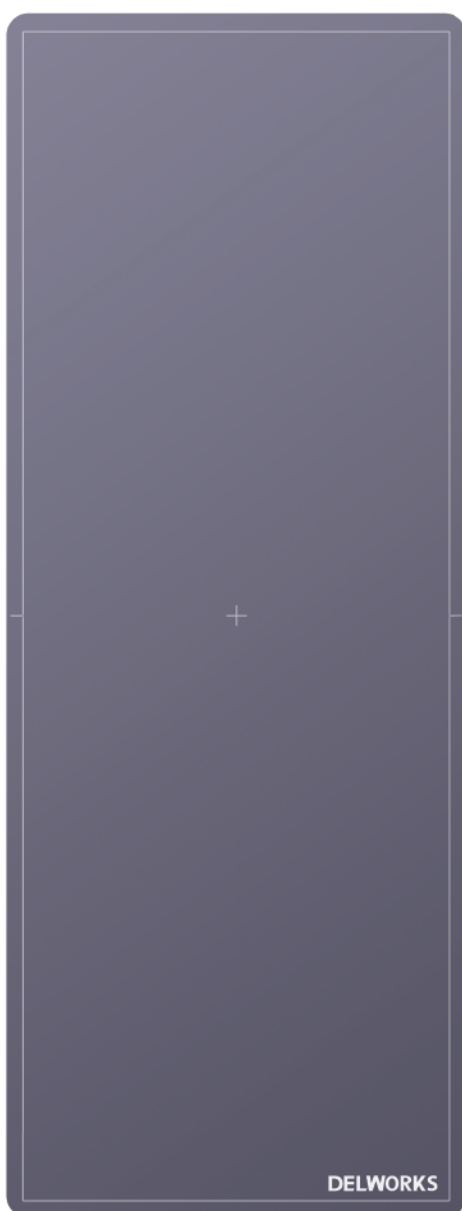
LONG LENGTH DIRECT
RADIOGRAPHY SYSTEM



System Overview

DELWORKS LLI

Improve workflow and decrease patient dose with DELWORKS LLI. The extensive image area of 17" x 42" (43 cm x 108 cm) enables full spine and long leg imaging with just one exposure. DELWORKS LLI eliminates potential stitching misalignments for improved confidence in diagnosis. Portability allows upright or supine image acquisition. Developed with highly sensitive AED (Automatic Exposure Detection) technology, DELWORKS LLI can be easily connected and synchronized with any x-ray generator.



Key Highlights



Largest Active Imaging Area



Optimized Workflow



Lower Dose



Long Length and Routine Studies



Portability - Weight 24 lbs.



Wireless or Wired Image Transfer



Features

Large Active Imaging Area - 17" x 42"

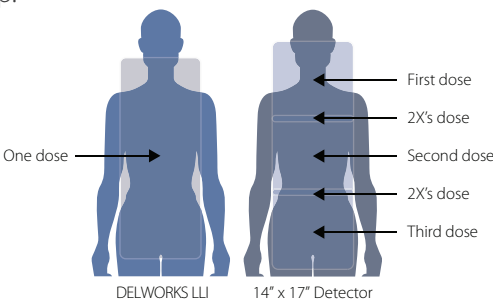
The DELWORKS LLI contains a DRZ+ scintillator coupled with an amorphous silicon detector. It has an active imaging area of 17" x 42" that can accommodate a wide variety of patient sizes in both supine or standing positions. High resolution images taken with or without a grid, need no stitching or subtraction and require minimal manipulation.

Portability - Weighing only 11 kg (24 lbs)

No other long-length detector is as portable as the DELWORKS LLI. Weighing only 11 kg (23 lbs) and equipped with wireless capability, the DELWORKS LLI is lightweight and mobile. It can be easily moved from a wall mount to a cart, or attached to a gurney.

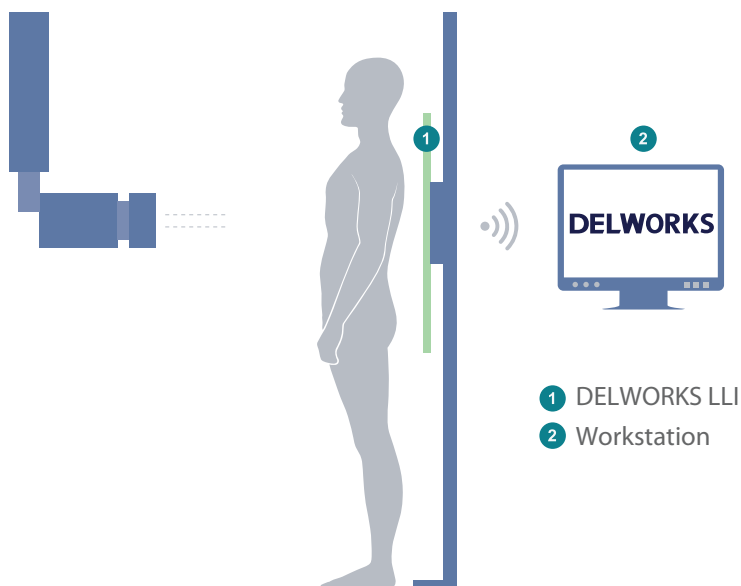
Low Dose - Lowest dose for the most sensitive patients

Use of the DELWORKS LLI delivers substantially less dose as compared with standard multi-exposure long bone or full spine imaging method while providing the highest geometric accuracy available. The monolithic panel reduces unevenness and provides a perfect density gradient with no overlap.



Wireless Transfer - DELWORKS LLI communicates with any designated access point

DELWORKS LLI can be easily repositioned for upright or supine imaging thanks to the freedom of wireless technology. Equipped with the latest and fastest 802.11ac wifi connectivity, DELWORKS LLI communicates directly with DELWORKS 3.0. The DELWORKS LLI is fitted with two rechargeable lithium ion batteries that take 2-3 hours to fully charge. One full charge yields 650 exposures and lasts 11 hours in standby mode. For wired use, the DELWORKS LLI comes with a 5m magnetically connected cable.



Work Efficiency - A single instant exposure

Experience a new level of efficiency, diagnostic confidence, and precision with the DELWORKS LLI. A single millisecond exposure simplifies workflow while simultaneously reducing patient motion artifacts lessening the time needed for them to hold still.

Routine Studies - Generate images of any part of the body

The DELWORKS LLI detector can also be used for any study by simply collimating to the area of clinical interest. DELWORKS will auto-shutter to generate images of any part of the body, making the DELWORKS LLI detector the only panel necessary for all of your imaging needs.



DR Features

Medical

The DELWORKS LLI is perfectly suited for orthopedics, trauma, and radiology applications. Given the full spine image acquisition in a single shot, the DELWORKS LLI is the best detector for the most sensitive population: children - specifically pediatric orthopedics. The DELWORKS LLI is an easy and practical addition to any radiology department or practice as it can be used for both routine and long-bone studies.



Chiropractic

Acquiring baseline full spine studies has never been easier with the DELWORKS LLI. The quick acquisition and highest geometric accuracy of the DELWORKS LLI makes it easy to acquire the full-spine studies that chiropractors need. Additionally, the ability to also acquire all other typically performed studies, it's easy portability, and cost-conscious price point makes the DELWORKS LLI the perfect detector for any practice looking to upgrade to DR or install their own imaging suite.



DR Features

High Quality Images, Reduced Patient Dose

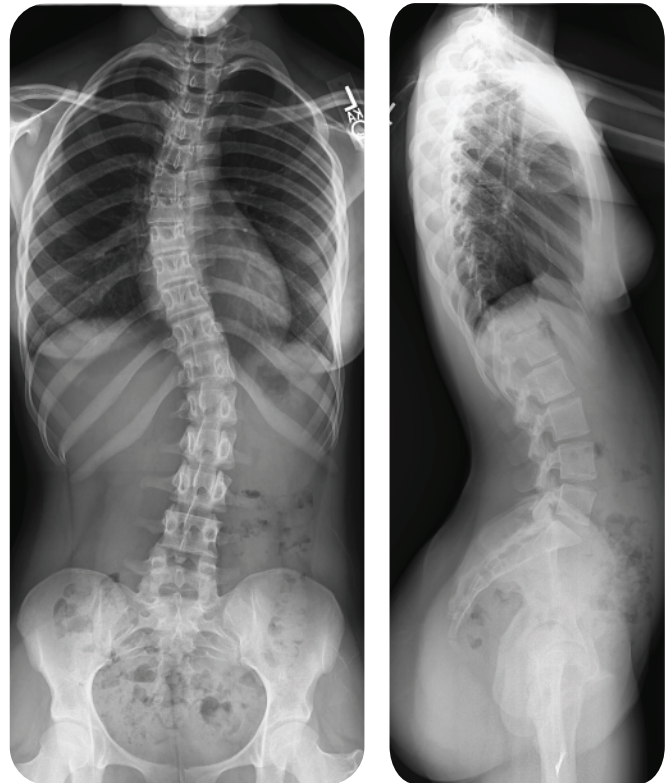
DELWORKS

DELWORKS is a powerful image acquisition and processing software featuring a user-friendly interface that provides sophisticated and speedy medical imaging. DELWORKS makes the complex simple.

Its advanced anatomical programming and image processing algorithms help optimize technologist productivity. DELWORKS strives to minimize human error and unwanted repeat exams to give technologists the highest quality image at a lower dose, with every exposure.

Software Features

- ▶ Pre-exposure display of patient and procedure information, X-ray generator exposure factors, status and control functions integrated in a single display screen
- ▶ Exam-specific image processing algorithms automatically optimize images based on selected patient anatomy
- ▶ APR specific default values with easy manual adjustment, if desired
- ▶ Image rotation in 90° steps, horizontal mirroring, automatic and manual image cropping to collimated area
- ▶ Easy verification and correction of image laterality and patient orientation



Large Active Imaging Area

Utilizing the single detector, DELWORKS LLI, eliminates the need for stitching multiple images such as full-spine studies and long-bone studies.

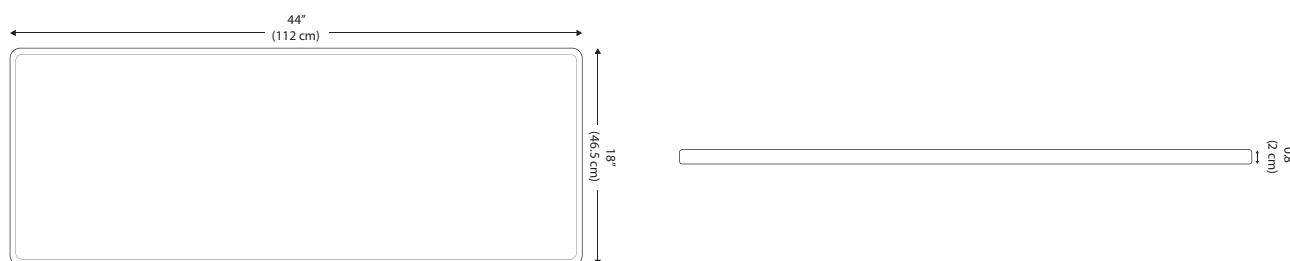
- ▶ Intuitively add orientation markers and text comments directly to acquired images (pre-defined or free text)
- ▶ Detailed histograms of pixel density
- ▶ User selection of modified LUT (Look-Up Table) based on various exam types
- ▶ Manual adjustment of the LUT, window and level
- ▶ Effectively manage rejected images

Technical Specifications

* All specifications subject to change without notice

DELWORKS LLI

Detector technology:	a-Si
Scintillator:	Gadolinium Oxysulfide
Active image area:	17" x 42" (43 cm x 108 cm)
Pixel Matrix:	7680 x 3072 (24mp)
Pixel pitch:	140 μ m
A/D conversion:	16 bit
Minimum detectable dose:	14nGy
Maximum linear dose (RQA5):	110uGy
MTF @ 1.0 LP/mm:	0.65/0.50
MTF @ 2.0 LP/mm:	0.33/0.21
MTF @ 3.0 LP/mm:	0.18/0.10
DQE @ 0.0 LP/mm (2.5uGy):	0.60/0.35
DQE @ 1.0 LP/mm (2.5uGy):	0.45/0.22
DQE @ 2.0 LP/mm (2.5uGy):	0.32/0.15
DQE @ 3.0 LP/mm (2.5uGy):	0.15/0.07
Ghost (% , 300uGy, 60s):	<0.25
Spatial resolution:	3.6 LP/mm
Image acquisition time:	1S
X-ray voltage range:	40 - 150 kV
Data interface:	GigE, Wifi
Power dissipation:	30 W
Adapter input:	AC 100 - 240V, 50 - 60 Hz
Adapter output:	DC 24 V, 60 W
Dimensions:	18" x 44" x 0.8" (46.5 cm x 112 cm x 2 cm)
Weight:	24 lbs
Detector housing material:	Carbon, Al Alloy
Water tightness:	IPX3



www.delmedical.com

New York
28 Calvert Street
Harrison, NY 10528
(Tel) 800.261.9808
(Fax) 914.835.6111

Illinois
241 Covington Drive
Bloomington, IL 60108
(Tel) 800.800.6006
(Fax) 847.288.7011

DEL MEDICAL

#9000-DWLLI 03.19