

OMNISCOP DREAM



STEPHANIX

MEDICAL IMAGING SOLUTIONS

www.stephanix.com

OMNISCOP DREAM



Omniscop DREAM surgical C-arm with Flat Panel Detector is suitable for both hip and aortic prosthesis procedures. Any kind of surgery is possible thanks to our wide range of generators and flat detectors.



OMNISCOP DREAM

COMFORT OF USE

The ergonomic design of the C-arm offers appropriate opening and positioning, from bariatric to extremities surgeries. The total size of the system has been designed to optimize the space inside the operating theatre.



The motorised variable height of the C-arm, the manual movements and the lateral handles on both sides, ensure an optimal positioning of the system.

Each release lever is marked with a color code corresponding to one movement.



OMNISCOP DREAM

8"X8" OR 12"X 12" FLAT PANEL DETECTORS

REMOVABLE GRID

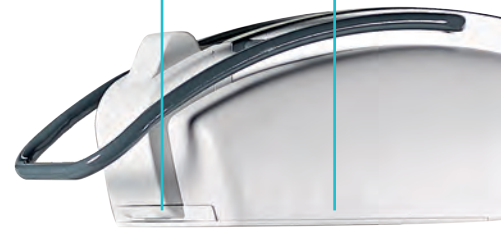
22" TOUCH SCREENS

ROTATING ASSEMBLY

VARIABLE HEIGHT

USB EXPORT, IMAGE
AND DOSE REPORT
(DICOM OPTIONS)

SPACE FOR THERMAL
PRINTER



MONOBLOCK GENERATOR
5 OR 20 KW

OMNISCOP DREAM

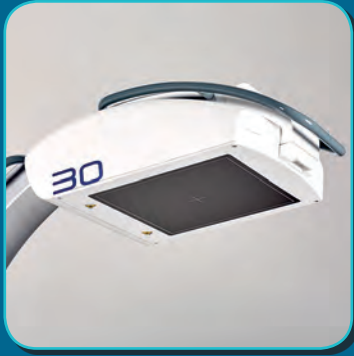
MOTORISED VARIABLE HEIGHT



12" OPERATOR TOUCH SCREEN

HANDLES FOR DISPLACEMENT





**FLAT PANEL DETECTOR
A-SI, AMORPHOUS SILICON**
8x8 or 12x12 Inches, two available sizes to fit with the specificity of each surgery.



DOSE REDUCTION
Half-dose exam, programmable and easy to reach in one-click. Removable grid.



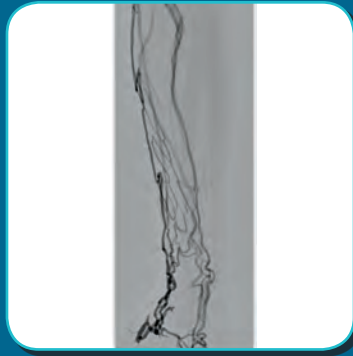
POSITIONING LASER
Located on both tube and detector sides, for more precise centring.



**WIRELESS FOOTSWITCH
(OPTION)**
To replace the standard wired footswitch.

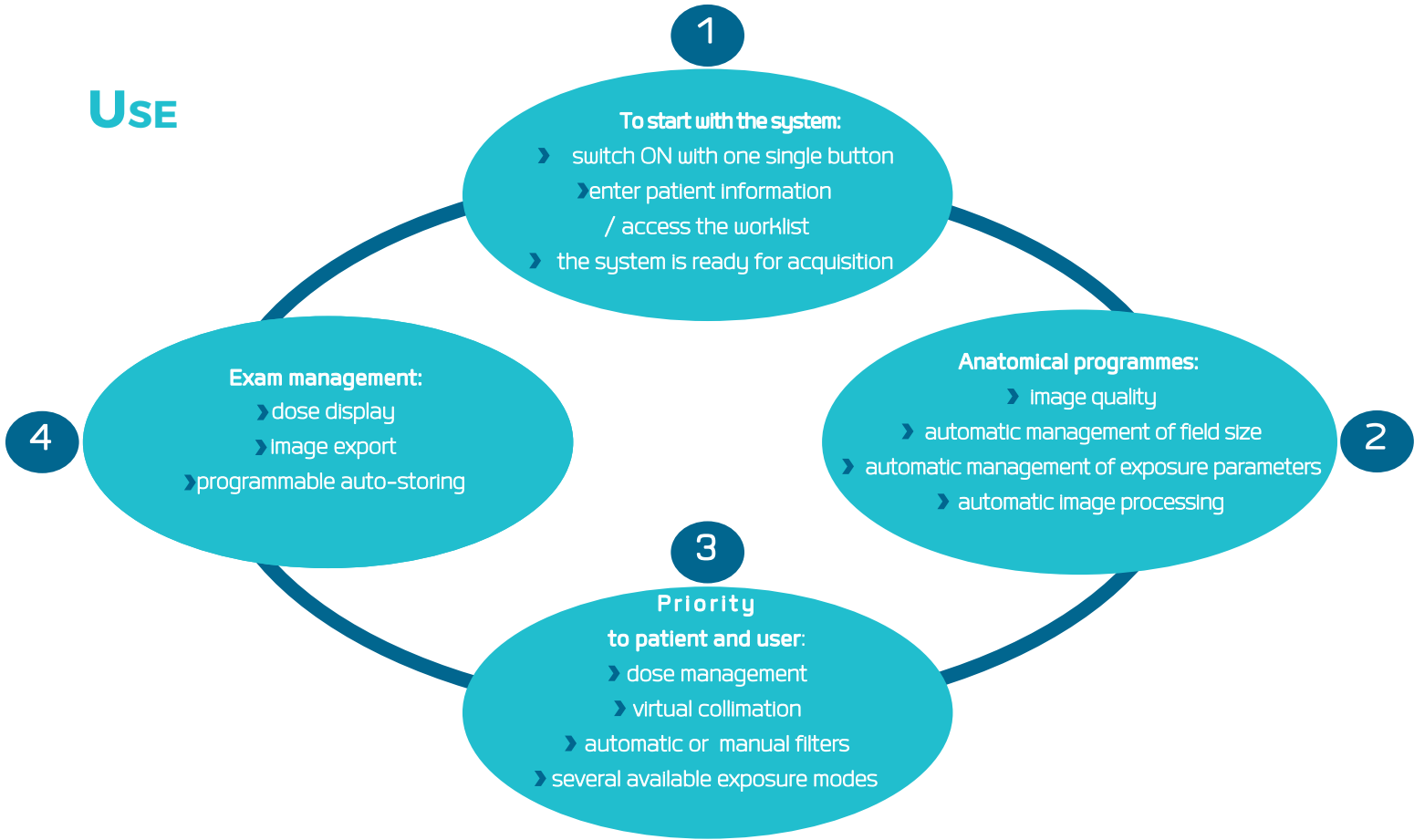


**ADVANCED
POST-PROCESSINGS**
Adapted to each preprogrammed anatomical protocol. For a reproducibility of image quality.

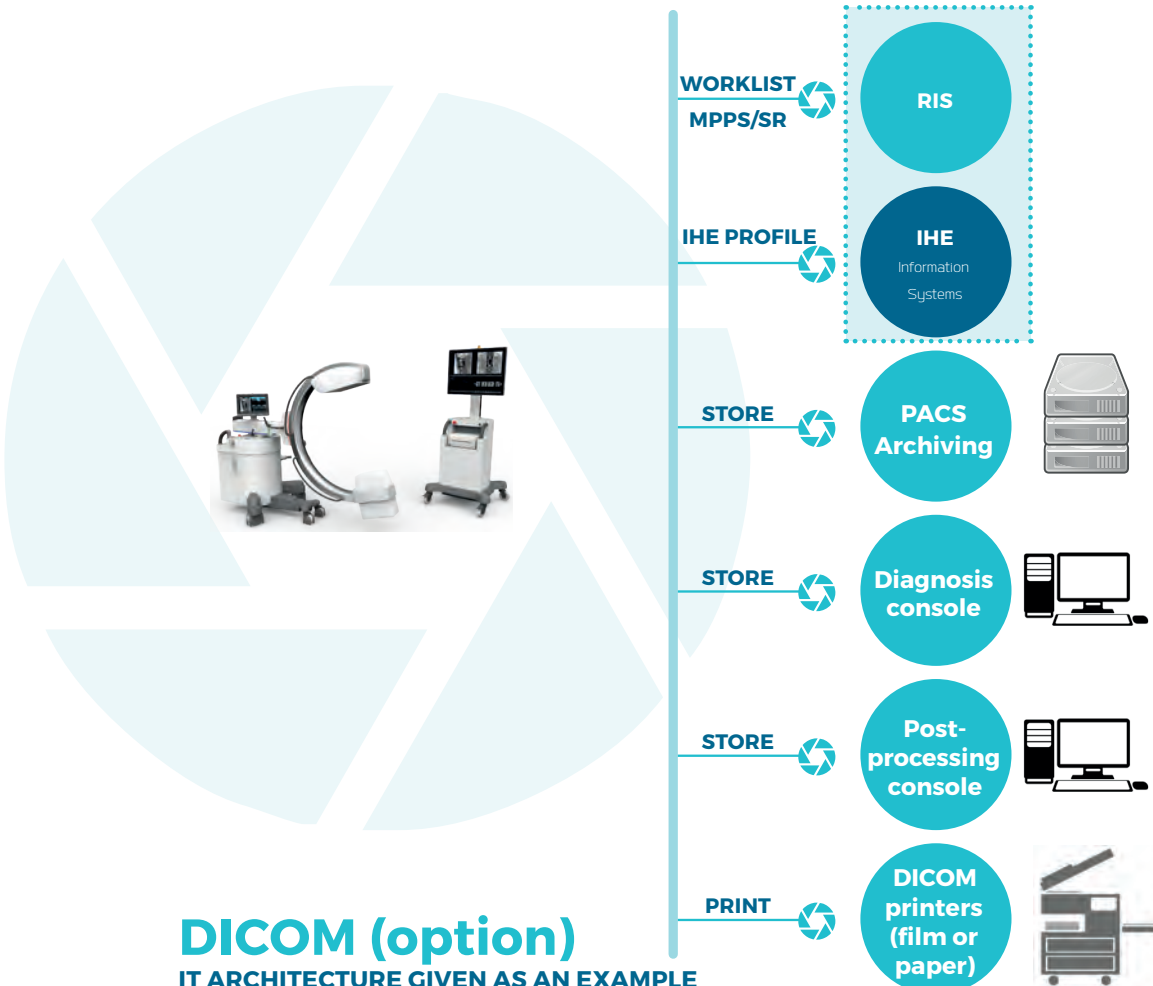


**DSA AND SPECIFIC
MEASUREMENT TOOLS
(OPTIONS)**
To meet all interventional vascular examinations needs.

USE



RF, DX AND XA MODALITIES



OMNISCOP DREAM

LATEST GENERATION OF DIGITAL RADIOGRAPHY SOLUTIONS: INTEGRATED, DYNAMIC, PORTABLE, WIRED AND WIRELESS DETECTORS.

D²RS

Dynamic Imaging



OMNISCOP DREAM

Surgical C-arms



NIR

2900 6th Avenue South
Birmingham, AL 35233